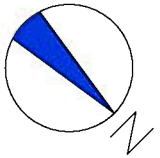
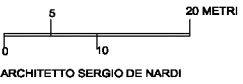


AREA SVILUPPO CASTELNUOVO
MQ 3900

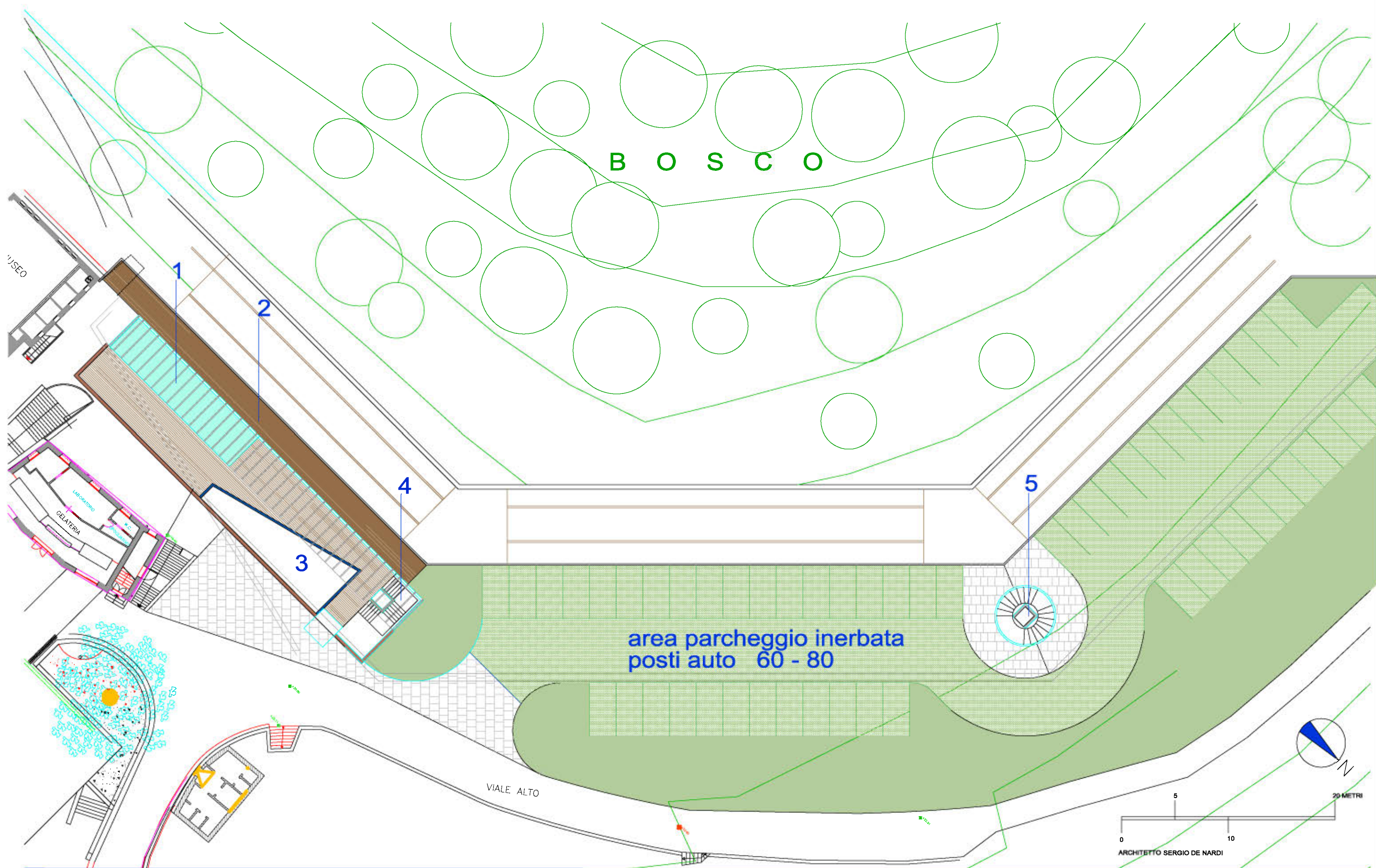
B O S C O

DATI GENERALI INDICATIVI

PISCINA COPERTA E SCOPERTA MQ 270
 PARCHEGGIO POSTI AUTO 60 - 80
 94 CAMERE OSPITI
 SUPERFICIE LORDA Livelli -1 -2 -3 -4 MQ. 5900
 VOLUMETRIA TOTALE DA COSTRUIRE MC 23000



ARCHITETTO SERGIO DE NARDI



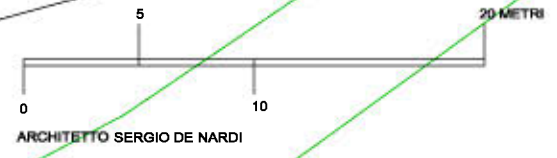
B O S C O

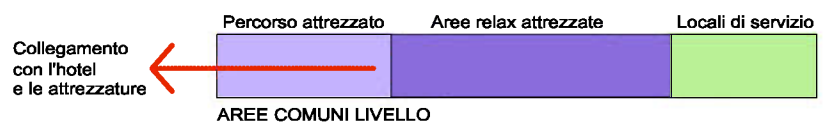
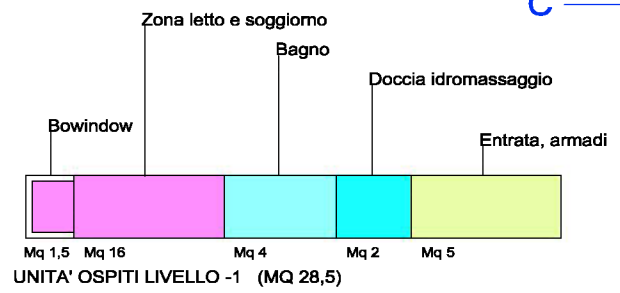
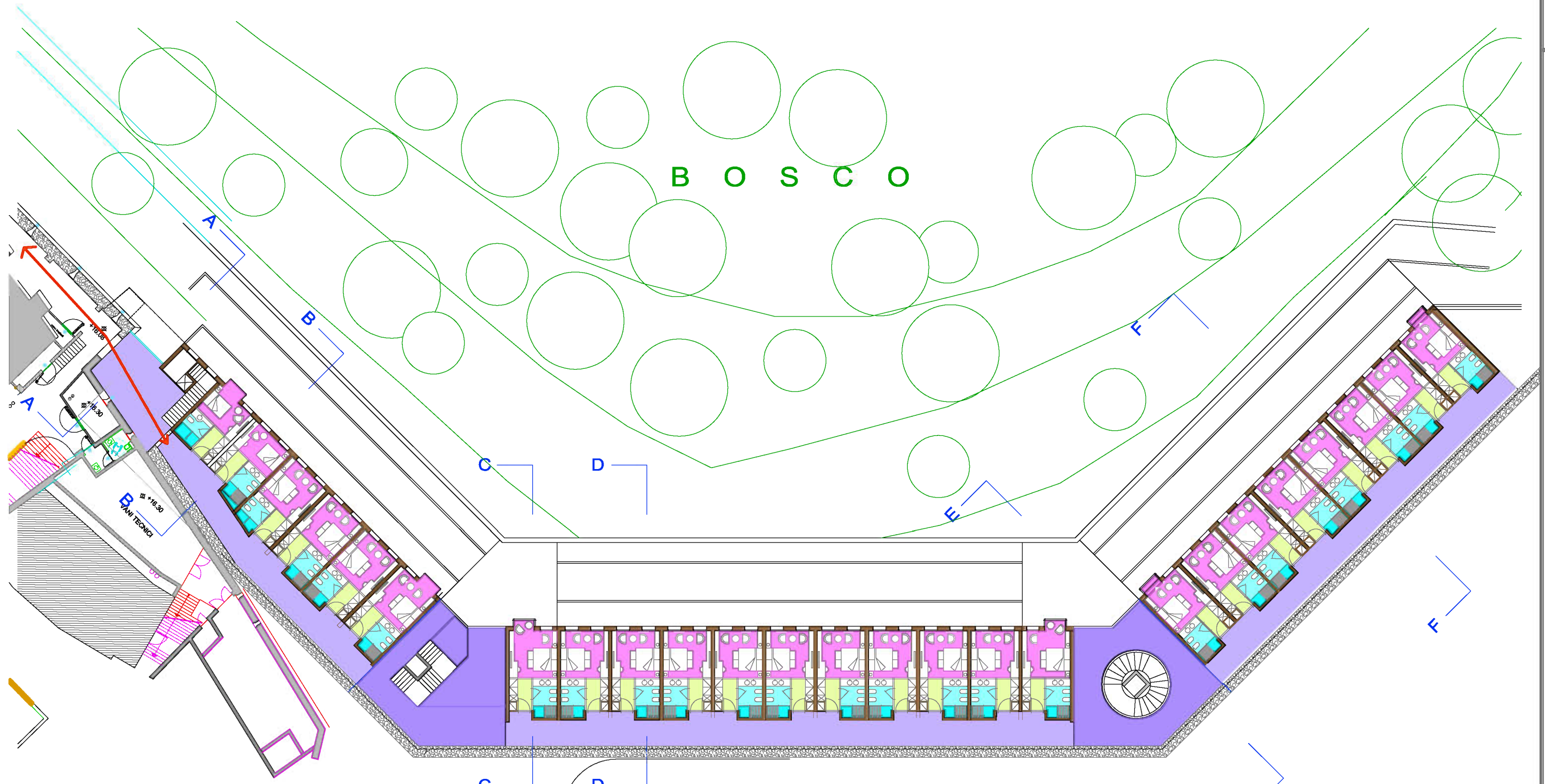
area parcheggio inerbata
posti auto 60 - 80

VIALE ALTO

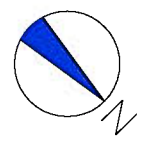
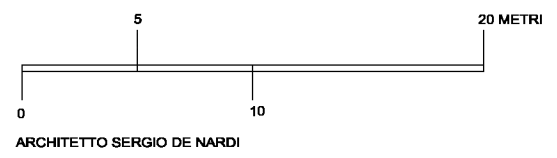
MUSEO

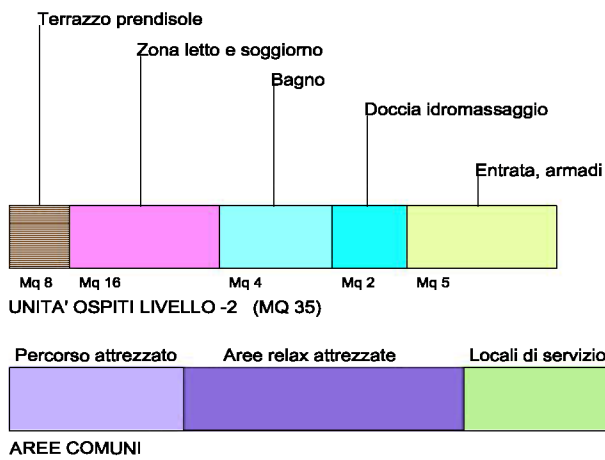
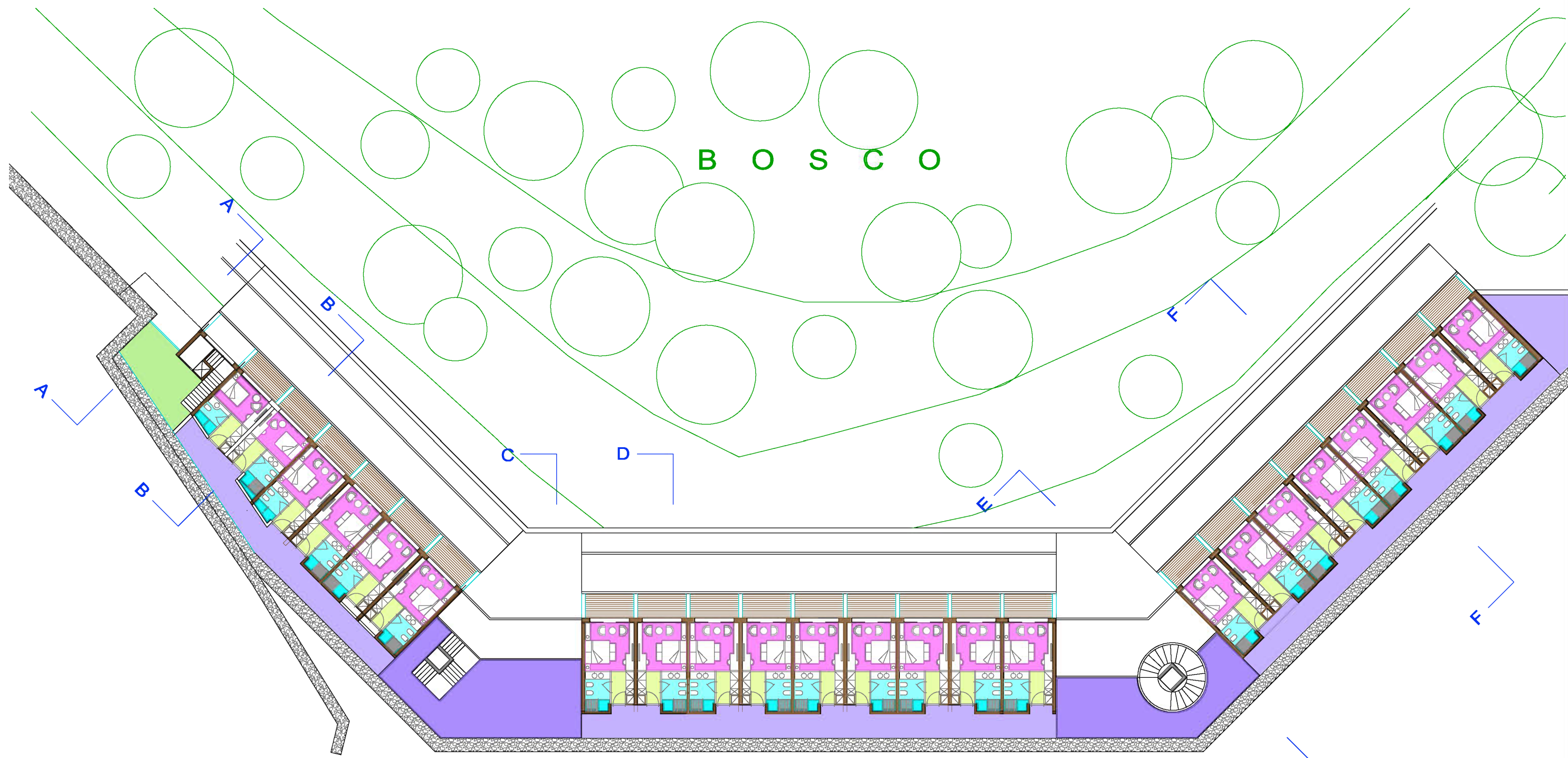
- 1 Piscina con copertura telescopica apribile
- 2 Area prendisole
- 3 Reception, bar, spogliatoio
- 4 Collegamento con l'area camere ospiti
- 5 Blocco vetrato collegamento ai piani



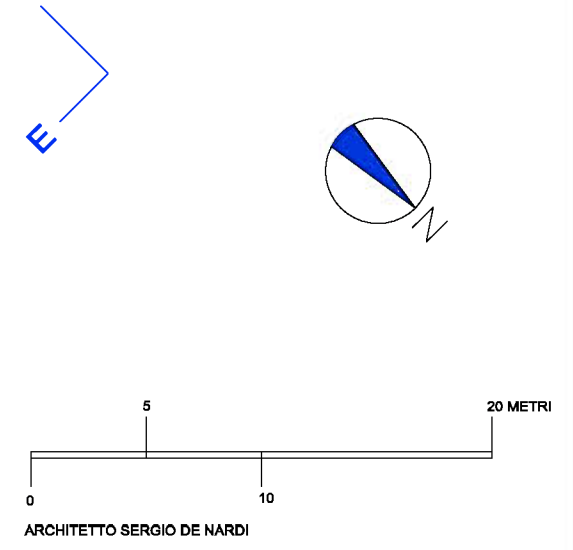


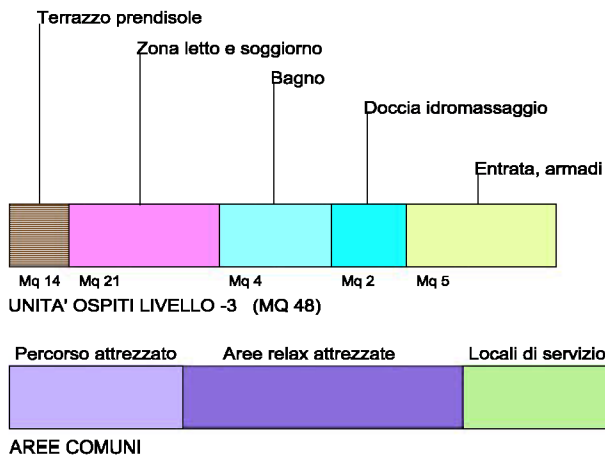
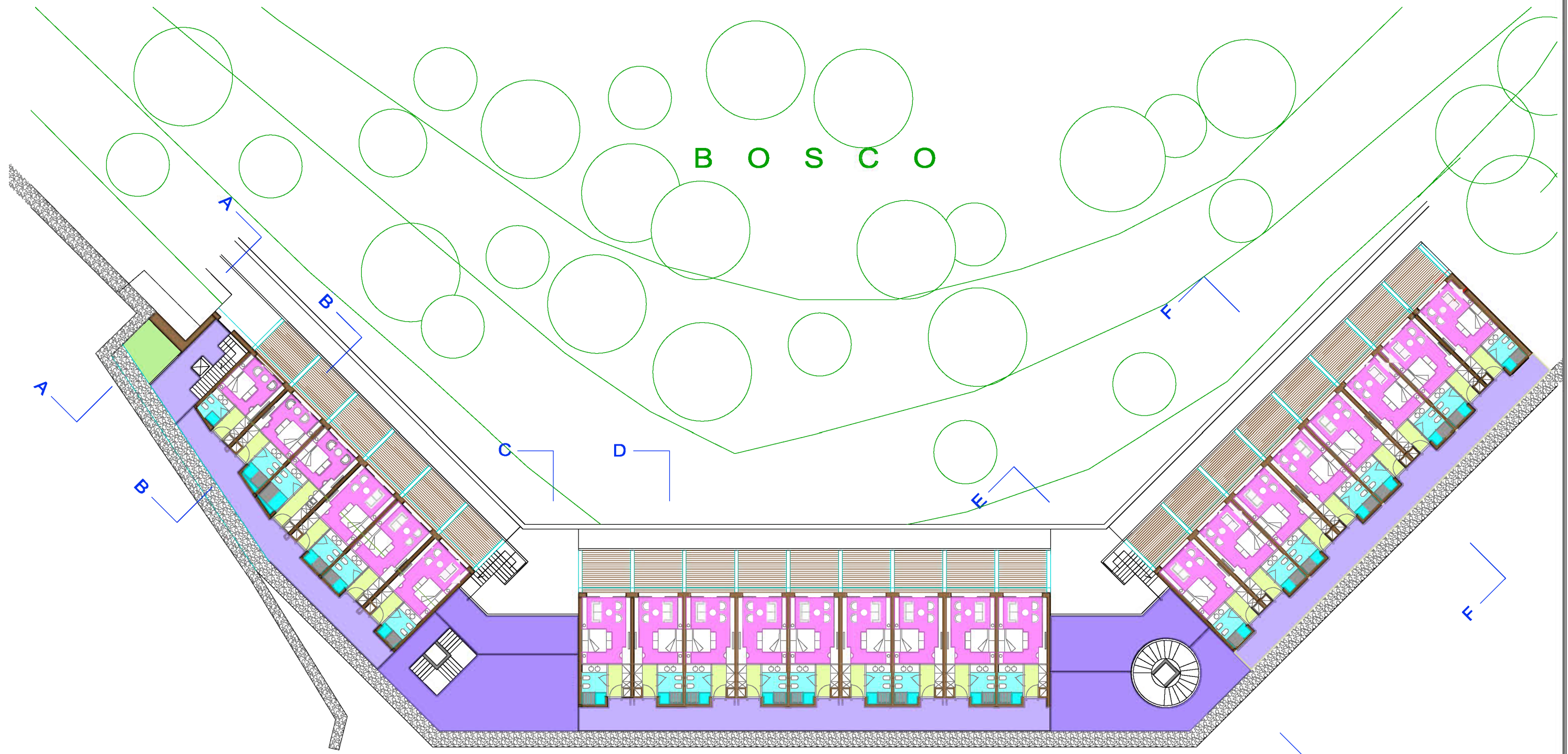
25 CAMERE OSPITI
SUPERFICIE LORDA MQ. 1350



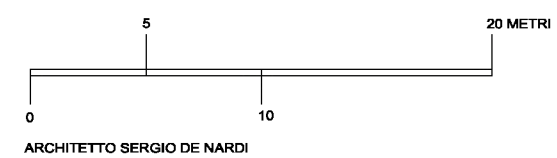


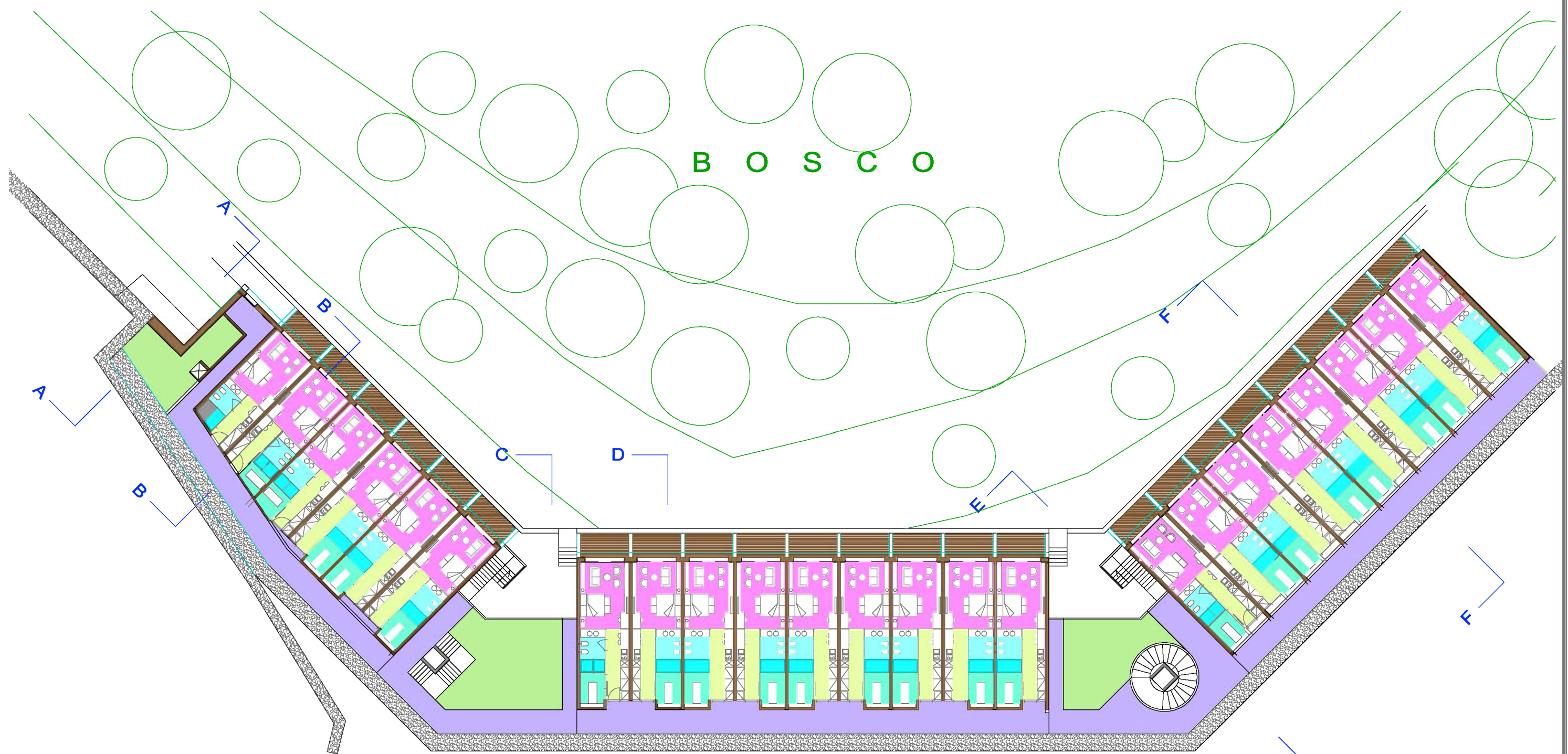
23 CAMERE OSPITI
SUPERFICIE LORDA MQ. 1270



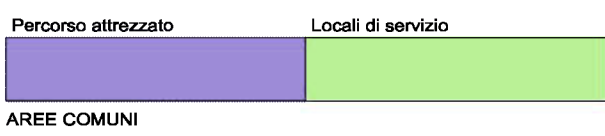
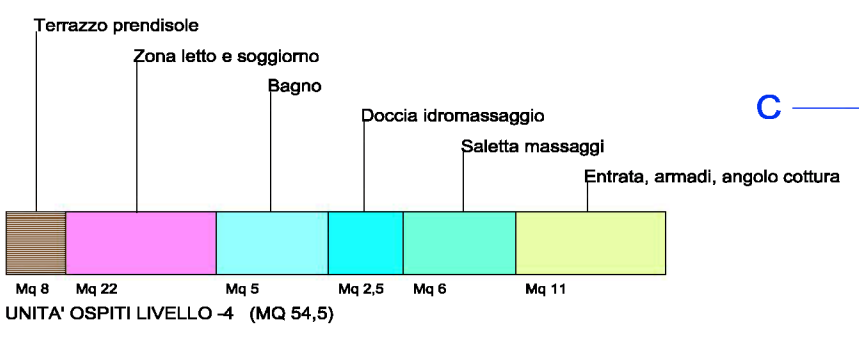


23 CAMERE OSPITI
SUPERFICIE LORDA MQ. 1465

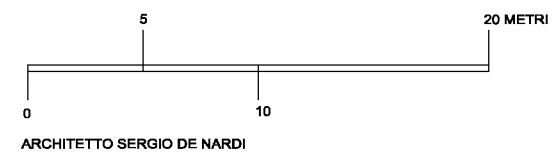


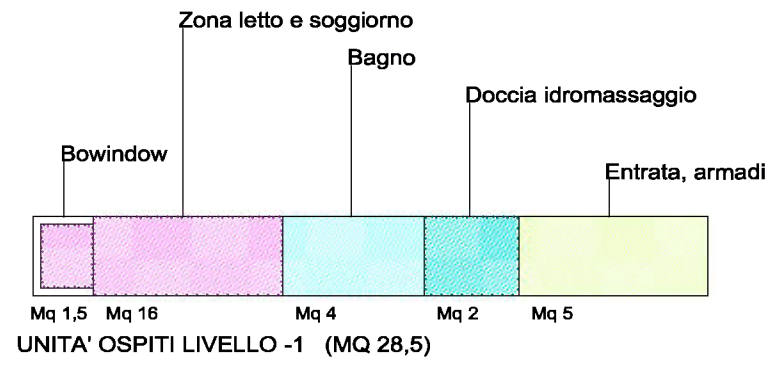


B O S C O

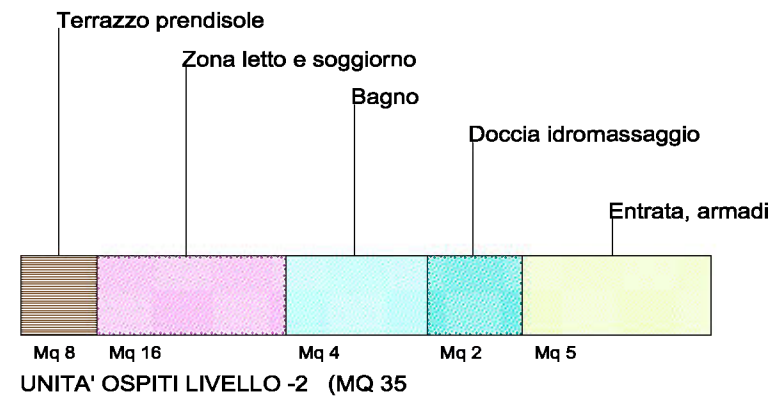


23 CAMERE OSPITI
SUPERFICIE LORDA MQ. 1800

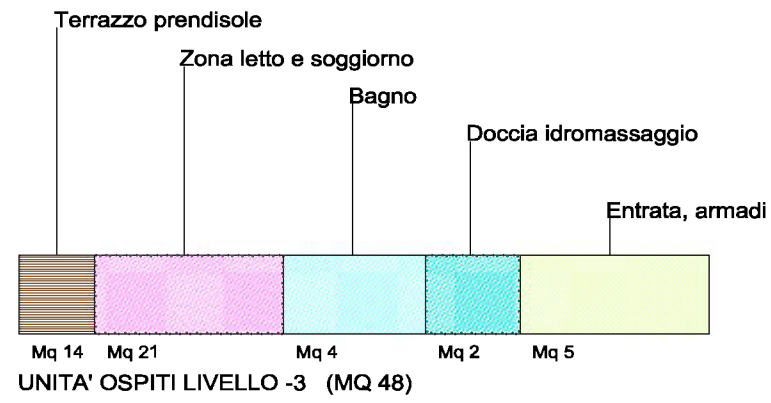




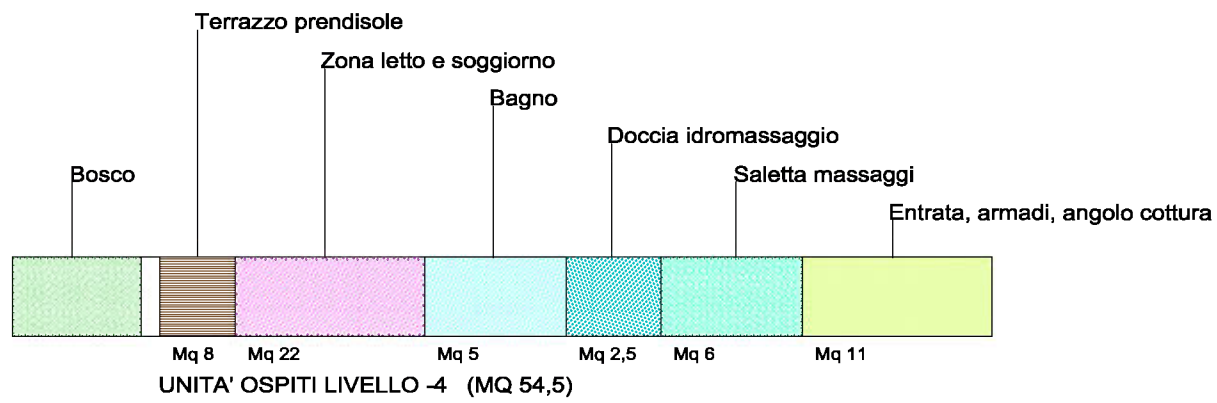
LIVELLO -1



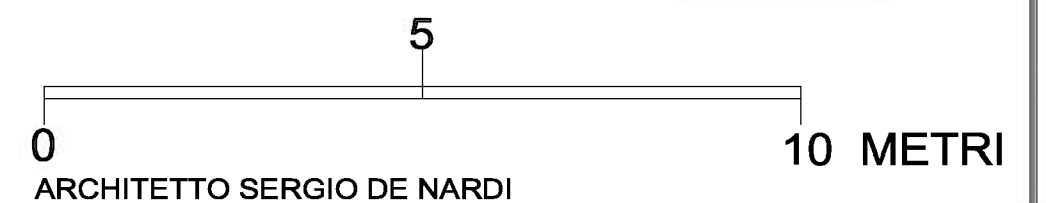
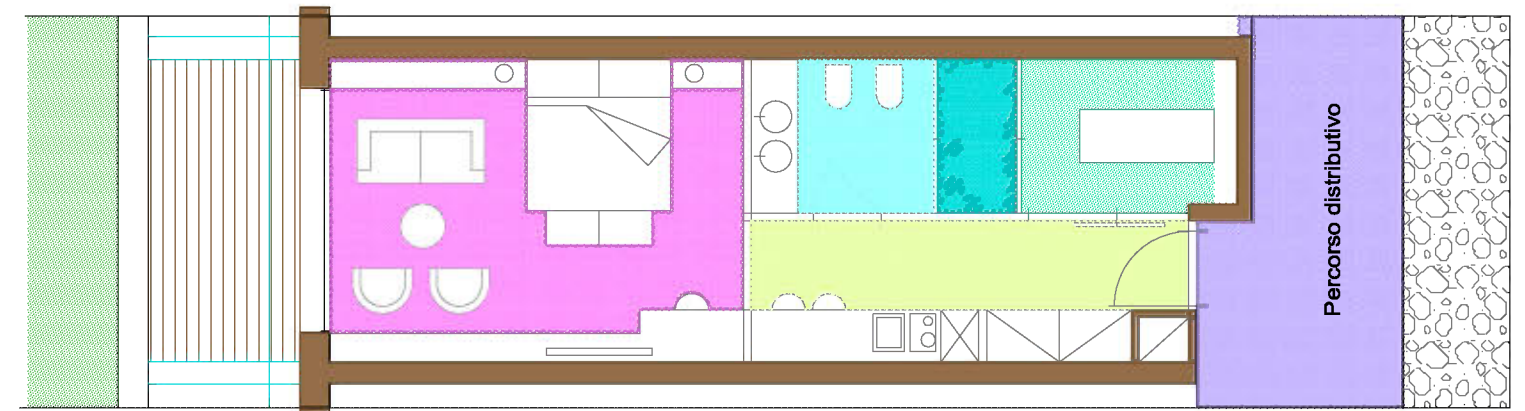
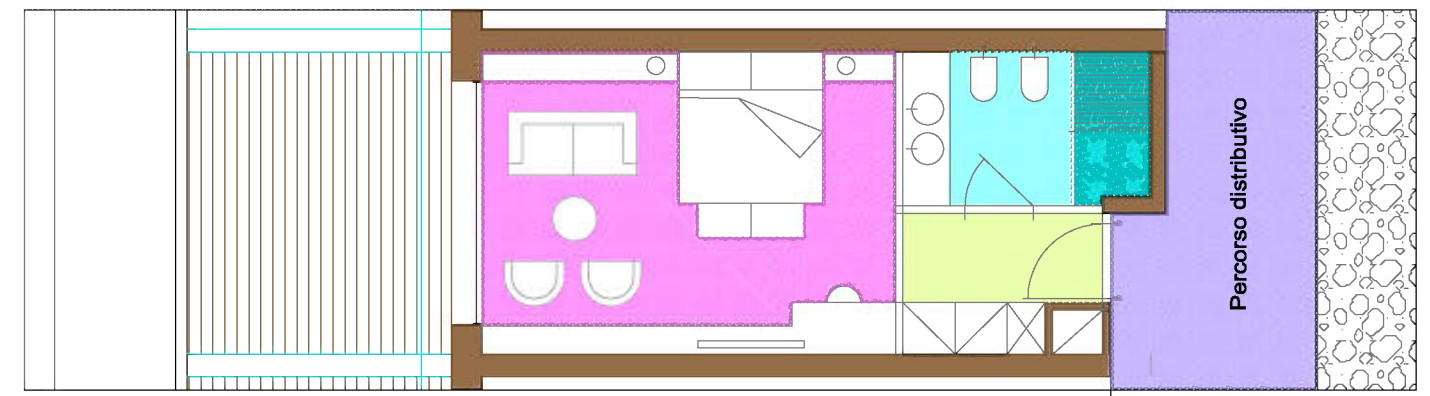
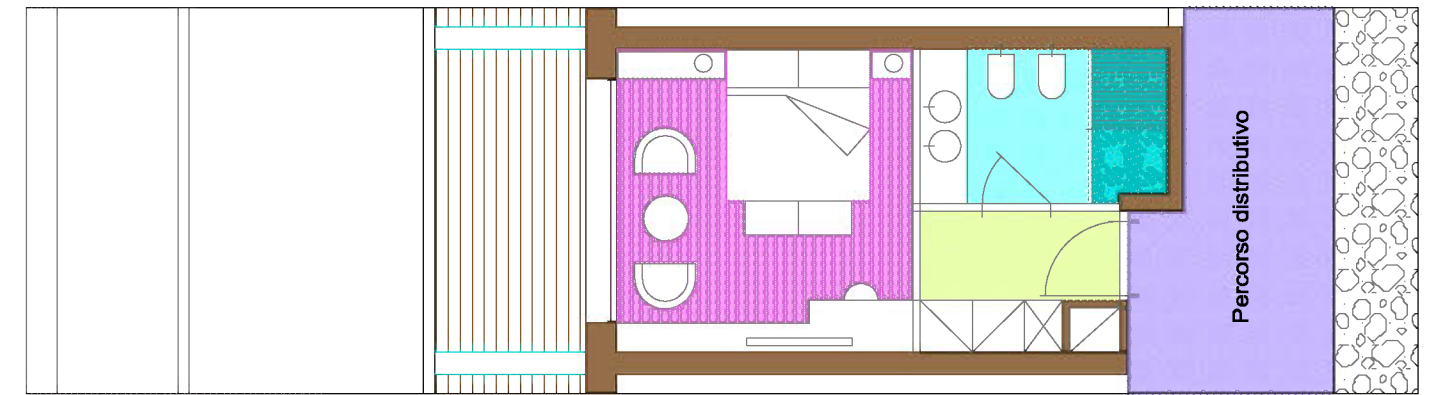
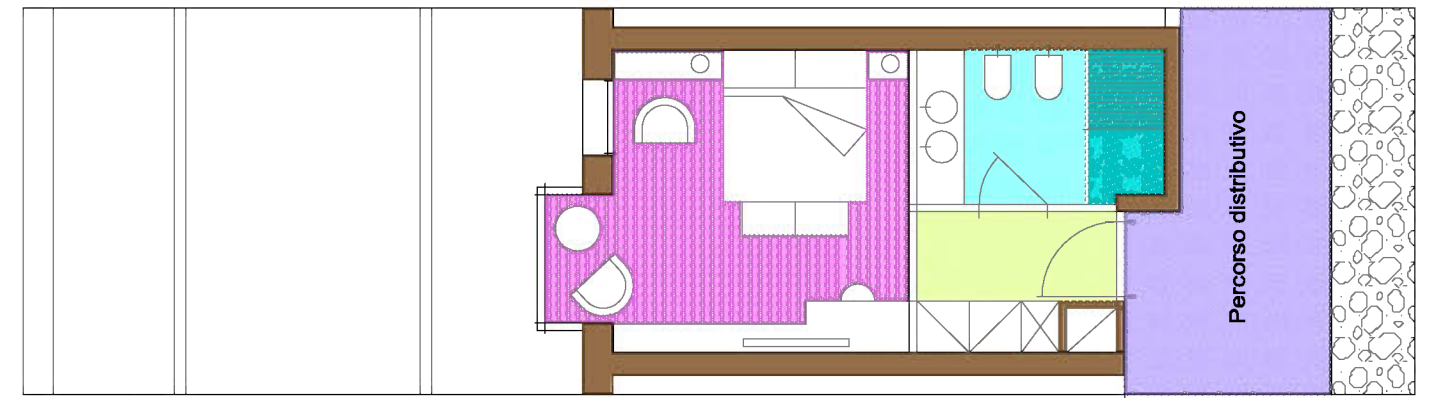
LIVELLO -2

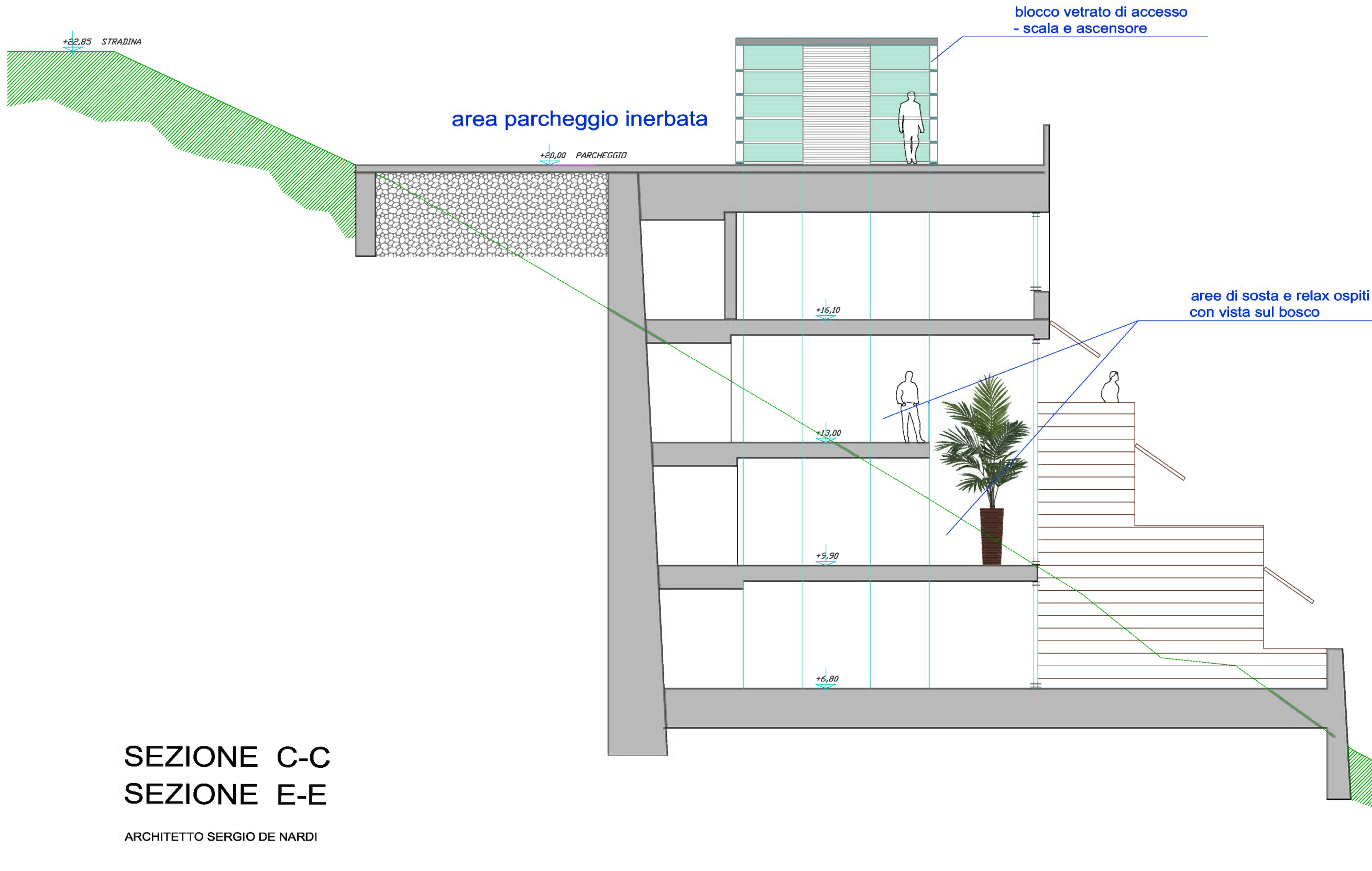


LIVELLO -3



LIVELLO -1

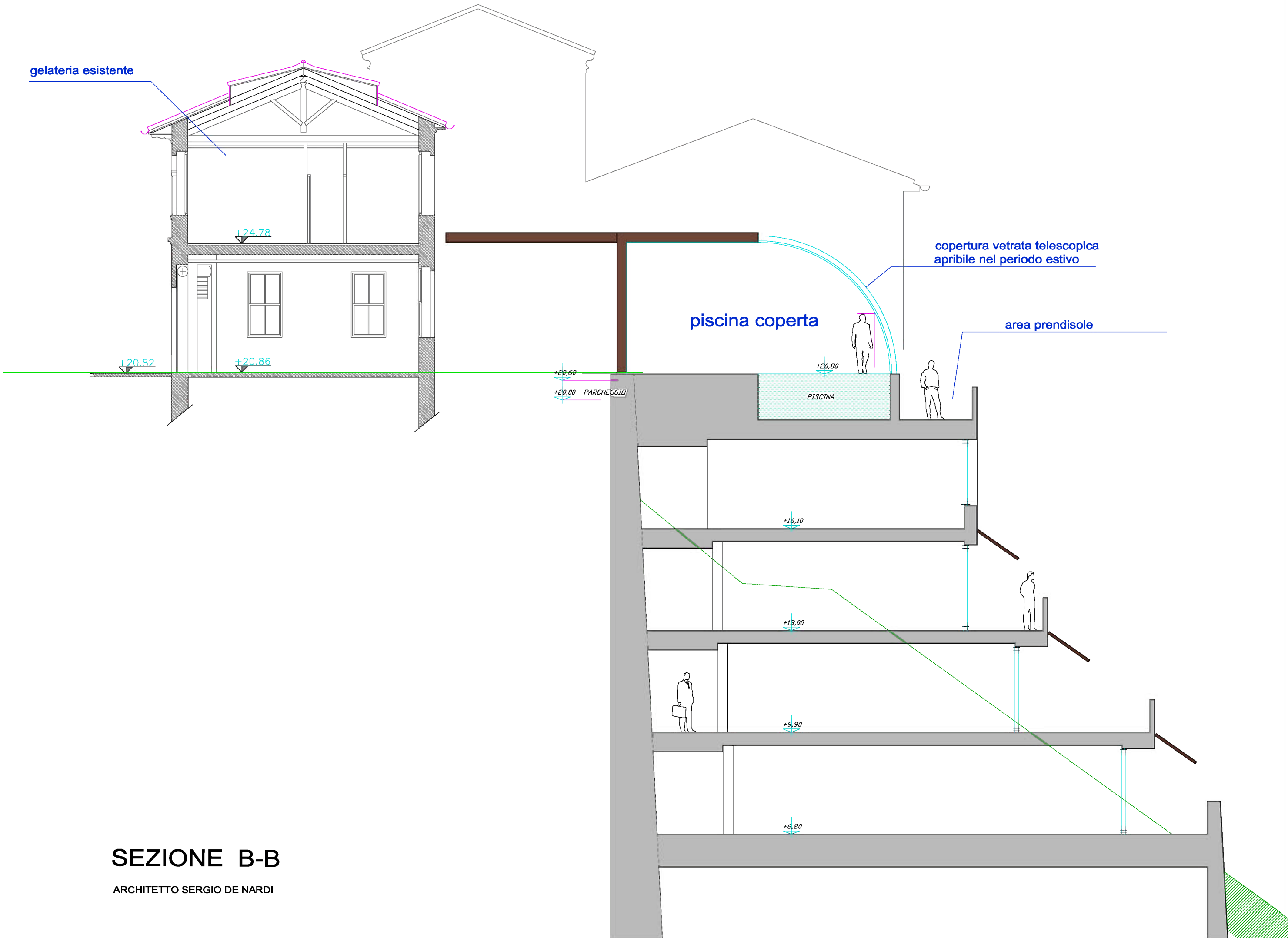




SEZIONE C-C
SEZIONE E-E

ARCHITETTO SERGIO DE NARDI

gelateria esistente



SEZIONE B-B

ARCHITETTO SERGIO DE NARDI